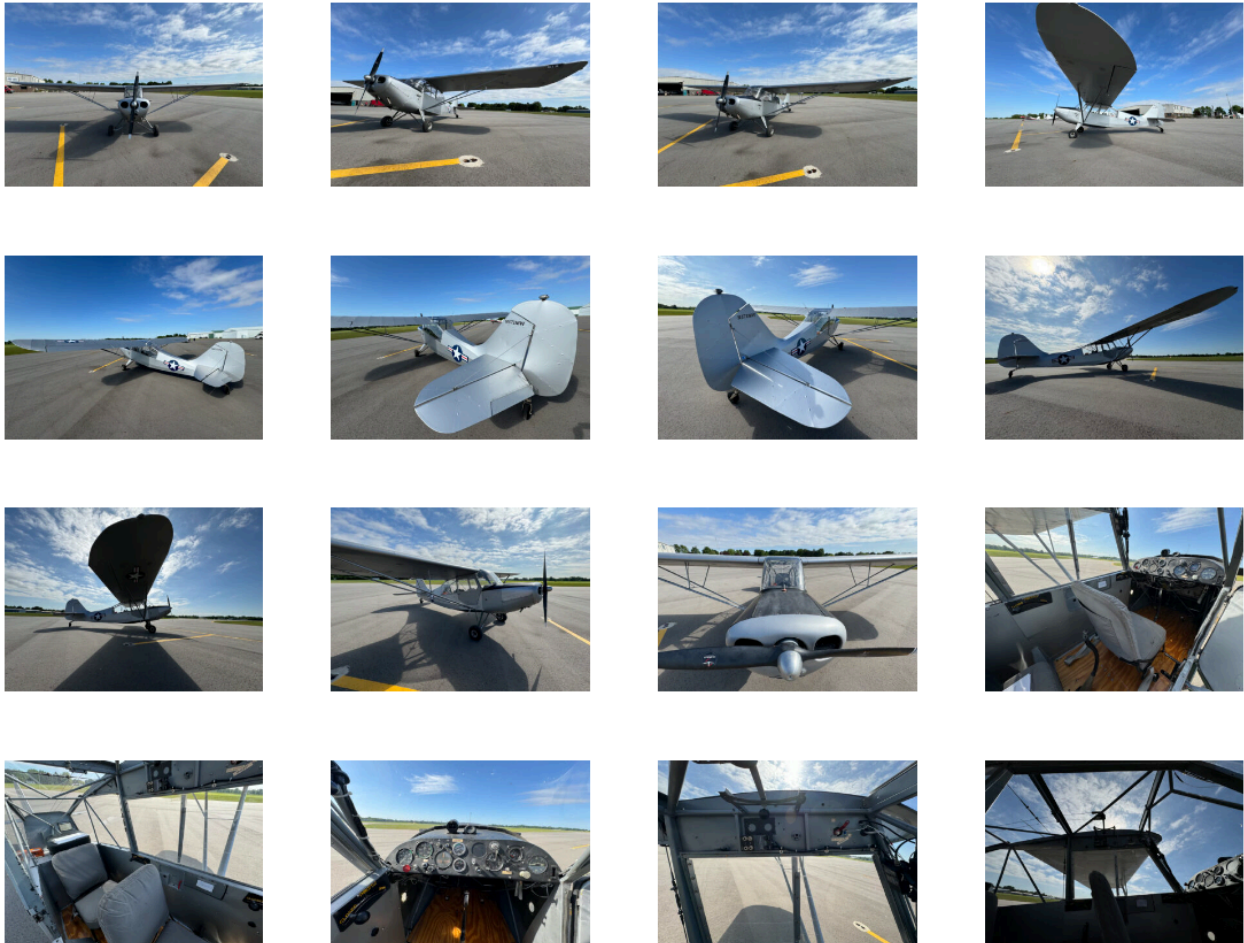




# 1946 Aeronca 7AC Champ

**N371MW**





## Description

This 1946 Aeronca Champ has been meticulously maintained and features a 100hp engine upgrade, a Skytec Electric Starter, and less than 400 hours on all-new fabric! With its larger engine and ease of flying, this aircraft is perfect for tailwheel enthusiasts, offering both reliability and enhanced performance. Ideal for recreational flying and training, it combines classic charm with modern upgrades, making it an exceptional choice for both new and experienced pilots.

---

---

## Detailed Specs

### Summary

N371MW  
SERIAL 7AC-364  
Gross Weight 1350  
Capacity 2  
Total Time 3213  
Always Hangared  
Recent Fabric  
Many Recent Engine Upgrades

### Avionics

RPM Indicator  
Airspeed Indicator  
Turn Coordinator  
Ammeter  
Oil Pressure Indicator  
Oil Temp Guage  
Altimeter  
Airspeed Indicator.  
Two Place Intercom  
Icom Radio Hardwired and Mounted.

### Airframe/Exterior

New Paint and Fabric In 2014  
Dual Auxillary Wing Tanks - 2 x 7.75 gallons & a single 13 gallons main tank.  
Recent New Tires

### Engine(s)

Continental O-200A 100 HP w electric start  
40 Hrs Since IRAN

---

---

New Skytec Starter Kit KCST2 - (The old starter was pull rod operated, which for most people tended to hang up, which then causes starter drive damage, which can put FOD in the engine causing substantial engine wear and eventually leading to engine failure. The new kit solves the problem and makes operation easier and more convenient)

New Cam & Gear

New Bearings, & Starter

Compression 74/80 74/80 76/80 75/80

## Prop

McCauley Fixed Pitch 1A101GCM

SPOH 259

## Interior.

Seats 2

Cloth Seats are in good condition, with no rips or tears. Less than 400 hours since all new.

## Remarks

This meticulously maintained 1946 Aeronca Champ, featuring a 100hp engine upgrade, new Skytec KCST2 electric start, and excellent fabric condition, is perfect for tailwheel enthusiasts. Combining classic charm with modern upgrades, it's ideal for recreational flying and training for both new and experienced pilots.

Noted Features:

Airwolf Oil Filter

Overhauled Mags

Artillery Spotter Nav Windows

Compliant on All ADs

Flown Regularly

---

---

To Get In Touch:

Please call Rob's Cell at (888) 261-7799

